

Trusted by...

Using one fully integrated system, Intact iQ will help us to optimise our processes and create personalised workspaces for our employees, saving us vast amounts of time, aiding decision making and make us a more agile and responsive business.

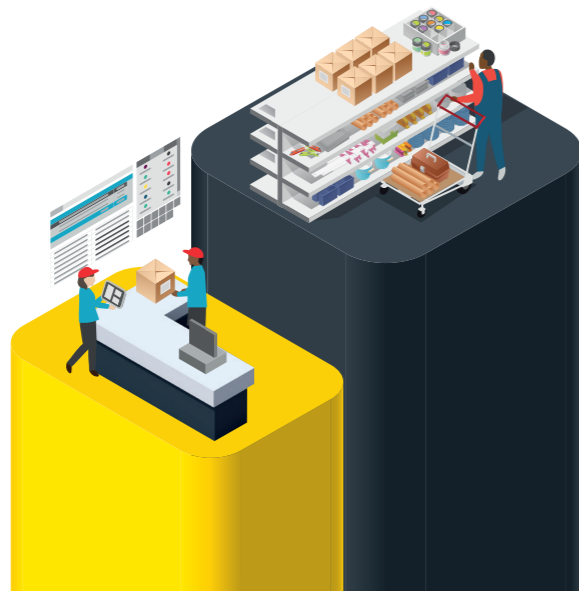
**Gordon Rothwell, Managing Director,
James Hargreaves.**

When a customer is on the phone or at the end of an email and they are needing a fast response, Intact is very fast and reliable, giving accurate up-to-date stock levels.

**Adam Walters, Sales Advisor,
Smith Brothers Store.**

We were looking for a modern, innovative solution that the entire team could have confidence in; one that we were sure would support both our medium and long term goals. We reviewed a number of systems and Intact iQ is undoubtedly the perfect fit for our business.

**Joe Tipper, Director,
Tippers Builders Merchant.**



The Intact Difference

At Intact, you're assured that our software, software extensions, services and expertise are 100% merchant focused and local to you. By partnering with Intact, you can confidently take on today's merchant challenges and successfully plan for your future.

**Elevate your business with
Intact iQ for merchants.**



Get started at
intactsoftware.com



Elevate your business

**Business software that
works on every level**





Your Future, One Solution.

Tackle today's merchant challenges and plan for future ambitions with Intact IQ's plumbing and heating ERP software.

COMPLETE FINANCIALS

For complete visibility and control, manage all your **financial reporting** and management accounts in a single solution.

ANYTIME, ANYWHERE MOBILE ACCESS

A personalised mobile work tool that gives **24/7 access** to view and capture relevant business information in real-time.

INTEGRATED ECOMMERCE

Customer online account management, B2B e-trade ordering or fully integrated ecommerce. We also offer an integrated online marketplace solution.

STOCK CONTROL SOP/POP
Automate **order processing procedures** & facilitate **intelligent stock management** throughout and across your branch/warehouse network.



TRADE COUNTER, EPOS
Fast, accurate order processing and **real-time** visibility of your margin & stock information.

CRM, SRM & MARKETING

Effectively manage your customers, suppliers, leads & prospects in a **centralised location**.

AUTOMATED INTELLIGENCE

Automate countless tasks, processes and business rules to **maximise efficiencies** and take the noise out of your business.

INTEGRATED ANALYTICS

Enterprise-wide, integrated business intelligence tools delivering **real time, relevant data** to aid decision making.

Industry-Specific Essentials

- Rapid trade counter order entry
- Advanced rebate management
- Multiple stock take options
- Transport scheduling
- Digital Supplier Catalogues
- Enhanced Special Product Handling
- Advanced replenishment rules
- Credit card integration
- Mobile POD & signature capture
- Automated Purchase Ledger
- In-depth margin, pricing, negotiation & cost controls

And the rest...

- Advanced levels of autonomy & control
- Future-proofed technology stack
- Infinitely extendable & scalable
- Centralised database for real-time data
- Seamless 3rd party integration
- Easy data migration

